



*Van der Graaf has provided solutions to the material handling industry for over half a century. By making consistent investments in factory automation over the years, Van der Graaf continues as the leading global supplier of conveyor belt drives for a broad range of industries. Whether it's an explosion-proof motor for driving coal mine conveyor belts or sanitary drives in a food processing plant, Van der Graaf has innovative designs to solve application challenges.*

*Van der Graaf has adhered to a simple principle: design a superior product to meet customer needs in a changing marketplace.*

*Van der Graaf offers outstanding application engineering and customer service for high quality products and years of low maintenance performance. Our products and people are trusted around the world for reliable performance and personal service.*



# SANITARY SERIES DRUM MOTORS

Safe, Reliable and Cost Efficient Power that Keeps Your Food Processing Business Running





# SANITARY SERIES DRUM MOTORS

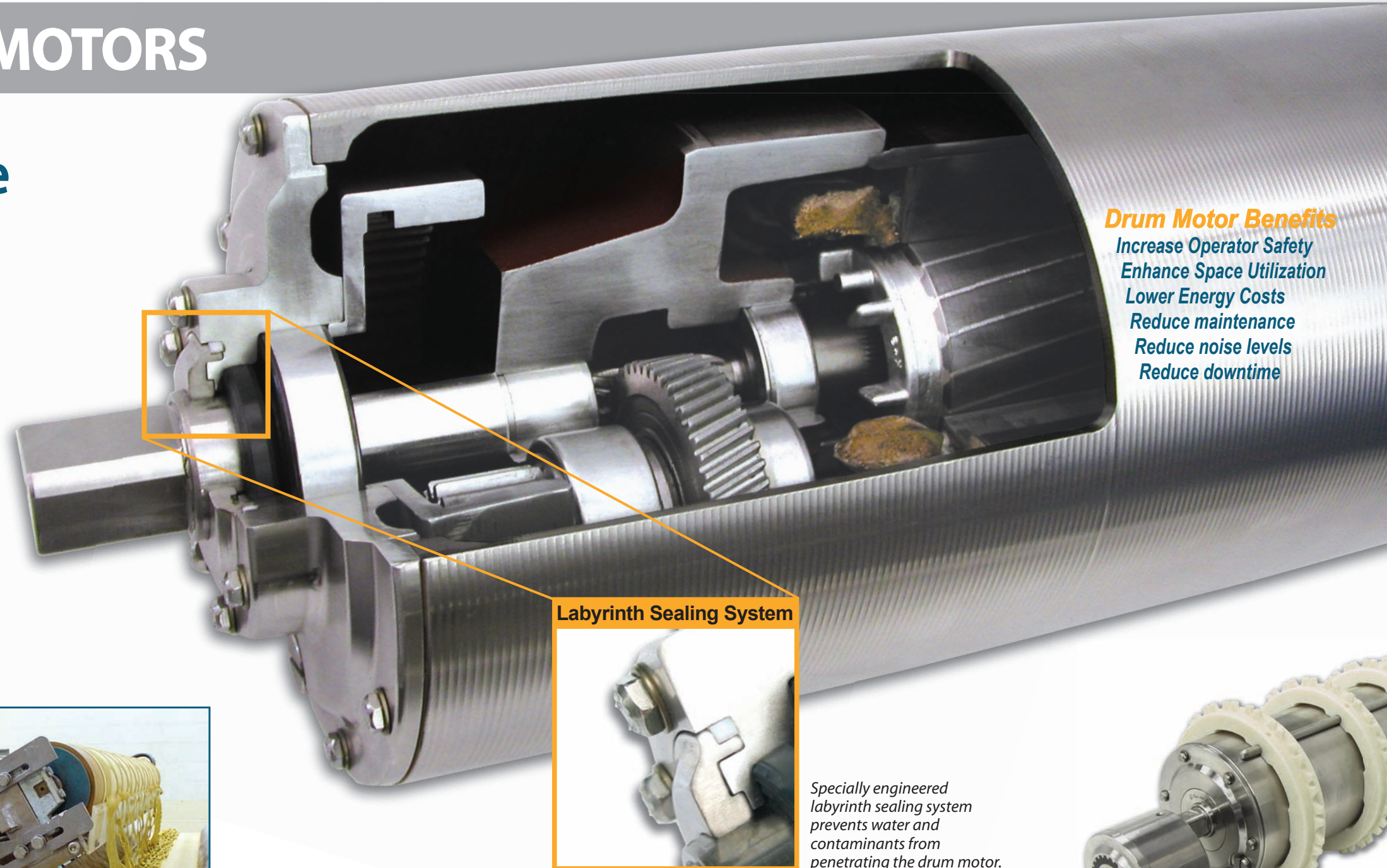
## Conveyors that require Chemical and Extreme Pressure (up to 2,000 psi\*) Wash Down.

Food processing industries commonly encounter the problem of bacterial build-up on their conveyor system. The SSV design drum motor incorporates a unique labyrinth sealing system allowing the drum motor to be washed using extreme pressure and with chemical sanitizers, therefore preventing the possible build-up of bacteria like listeria and other contaminants.

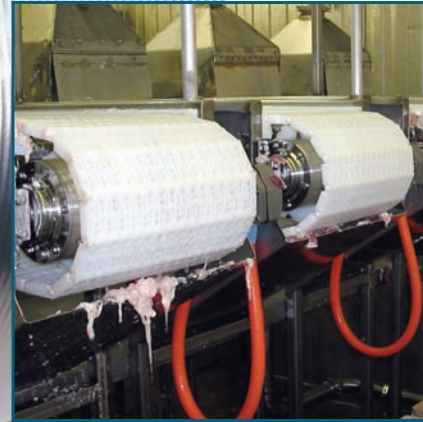
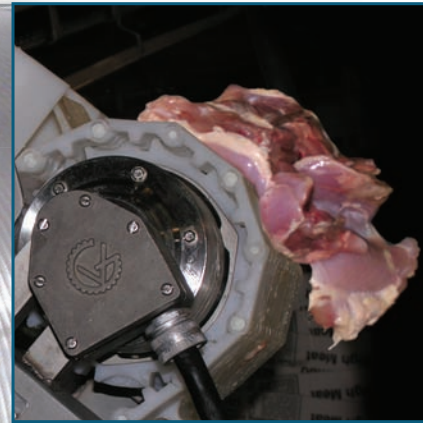
The labyrinth SSV sealing system also prevents water, chemicals or contaminants from penetrating the drum motor resulting in long and trouble-free performance. All external components of the drum motor are constructed using 316 or 304 stainless steel. This includes the hex head bolts and junction box, which exceeds USDA/FDA requirements, ensuring that the highest level of hygiene is maintained.

Van der Graaf drum motors are quick and easy to install with no maintenance other than an oil change every 50,000 hours of operation.

*\* Pressure measured at any point 2 inches from the drum motor.*



- Drum Motor Benefits**
- Increase Operator Safety
  - Enhance Space Utilization
  - Lower Energy Costs
  - Reduce maintenance
  - Reduce noise levels
  - Reduce downtime



### Labyrinth Sealing System



*Specially engineered labyrinth sealing system prevents water and contaminants from penetrating the drum motor.*

**FIXED SPEEDS FROM**  
1.8 - 1369 ft./min.

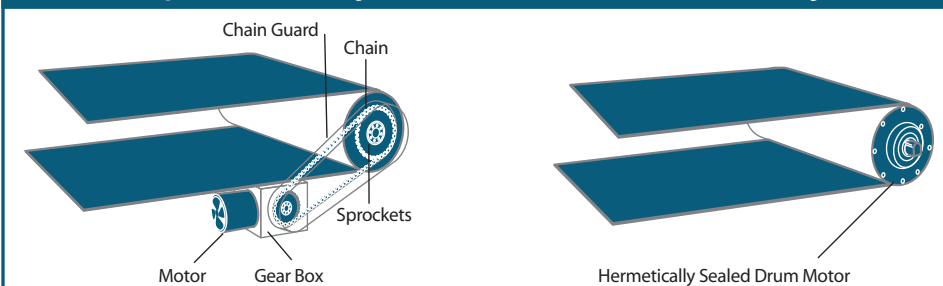
**DIAMETER**  
5.0 - 8.54 inches

**HORSEPOWER**  
0.13 - 7.5 hp

**AVAILABLE WITH:**  
- Food grade lagging  
- Sprockets for modular style belting



### Multi Component Conveyor Drive vs Drum Motor Conveyor Drive



*The motorized pulley or Drum Motor houses all components internally, eliminating the need for external components like motor, gearbox, chain, chain guard and pillow block bearings. This reduces operating and maintenance costs, improves safety conditions and because it is completely sealed our drum motors can operate in extreme conditions.*

