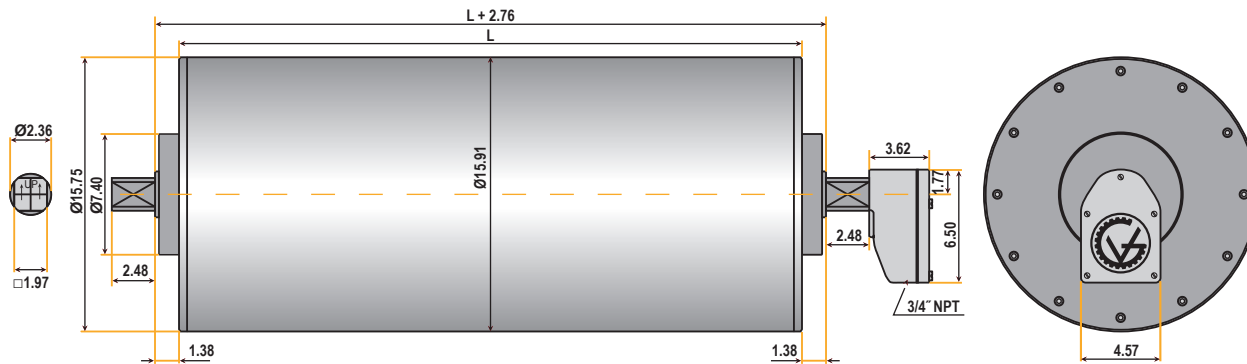


# TM400 SERIES

(16.0" diameter)

DIMENSIONS (in inches)

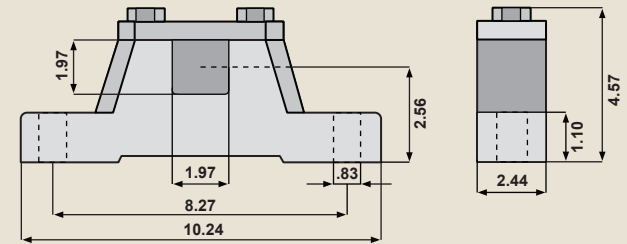
## TM400A60 Drum Motor (matching Idler KT400A60\*\*)



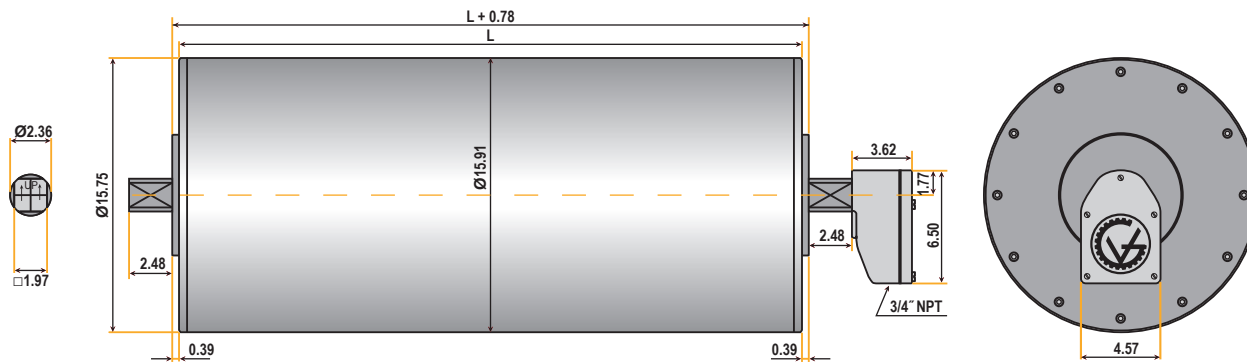
Standard face widths\* (L) in inches:

23.62	25.59	27.56	29.53	31.50	33.46	35.43	37.40	39.37
41.34	43.31	45.28	47.24	49.21	51.18	53.15	55.12	57.09
59.06								

## Bracket AB 60



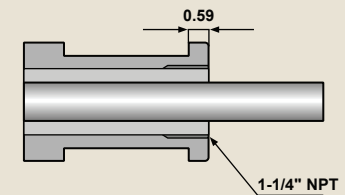
## TM400B60 Drum Motor (matching Idler KT400B60\*\*)



Standard face widths\* (L) in inches:

25.59	27.56	29.53	31.50	33.46	35.43	37.40	39.37	41.34
43.31	45.28	47.24	49.21	51.18	53.15	55.12	57.09	59.06

## Optional Cable Type



Note: When Optional Cable Type is selected, the minimum face width (L) increases by 3.94 inches.

\*Some face widths are not available in all horsepower. For minimum available face widths refer to TM400 Specifications.

\*\*Idler dimensions are identical to the drum motor with no junction box.



# TM400 SERIES

(16.0" diameter)

## SPECIFICATIONS

TM400 - 420 (20.0 HP 1740 RPM)	Minimum Face Width (L): DESIGN A = 27.56" DESIGN B = 29.53"												WEIGHT = 539.40 LBS. @ L=25.59"
V (ft/min)	885	639	591	534	501	420	386	354	306	254	214	185	153
NLV (ft/min)	920	665	614	555	520	437	401	368	318	264	222	192	159
BP (lbs)	747	1033	1119	1238	1320	1573	1713	1867	2160	2600	3094	3581	4310
T' lbs.	494	684	741	820	874	1042	1134	1236	1431	1722	2049	2371	2854
<b>WITH 0.25" LAGGING</b>													
V (ft/min)	913	660	609	551	516	433	398	365	315	262	220	190	158
NLV (ft/min)	949	686	633	572	537	450	414	380	328	272	229	198	164
BP (lbs)	724	1002	1085	1200	1280	1526	1661	1810	2094	2521	3000	3472	4179
T' lbs.	494	684	741	820	874	1042	1134	1236	1431	1722	2049	2371	2854
TM400 - 415 (15.0 HP 1740 RPM)	Minimum Face Width (L): DESIGN A = 25.59" DESIGN B = 27.56"												WEIGHT = 534.50 LBS. @ L=25.59"
V (ft/min)	885	639	591	534	501	420	386	354	306	254	214	185	153
NLV (ft/min)	920	665	614	555	520	437	401	368	318	264	222	192	159
BP (lbs)	560	775	839	928	990	1180	1285	1400	1620	1950	2321	2685	3233
T' lbs.	371	513	556	615	656	782	851	927	1073	1292	1537	1779	2141
<b>WITH 0.25" LAGGING</b>													
V (ft/min)	913	660	609	551	516	433	398	365	315	262	220	190	158
NLV (ft/min)	949	686	633	572	537	450	414	380	328	272	229	198	164
BP (lbs)	543	751	814	900	960	114	1246	1357	1571	1891	2250	2604	3134
T' lbs.	371	513	556	615	656	782	851	927	1073	1292	1537	1779	2141
TM400 - 410 (10.0 HP 1740 RPM)	Minimum Face Width (L): DESIGN A = 23.62" DESIGN B = 25.59"												WEIGHT = 507.10 LBS. @ L=25.59"
V (ft/min)	885	639	591	534	501	420	386	354	306	254	214	185	153
NLV (ft/min)	920	665	614	555	520	437	401	368	318	264	222	192	159
BP (lbs)	373	517	559	619	660	787	856	933	1080	1300	1547	1790	2155
T' lbs.	247	342	370	410	437	521	567	618	715	861	1025	1186	1427
<b>WITH 0.25" LAGGING</b>													
V (ft/min)	913	660	609	551	516	433	398	365	315	262	220	190	158
NLV (ft/min)	949	686	633	572	537	450	414	380	328	272	229	198	164
BP (lbs)	362	501	542	600	640	763	830	905	1047	1260	1500	1736	2089
T' lbs.	247	342	370	410	437	521	567	618	715	861	1025	1186	1427
TM400 - 475 (7.5 HP 1740 RPM)	Minimum Face Width (L): DESIGN A = 23.62" DESIGN B = 25.59"												WEIGHT = 496.00 LBS. @ L=25.59"
V (ft/min)	534	386	302	228	214	185	153						
NLV (ft/min)	555	401	314	237	222	192	159						
BP (lbs)	464	642	821	1088	1160	1343	1616						
T' lbs.	307	425	543	720	768	889	1070						

V = Velocity NLV = No Load Velocity BP = Belt Pull T = Torque RPM = Internal Electric Motor RPM

**NOTE:** Total weight of the unit increases by 6.72 lbs. per inch above 25.59 inches.

All drum motors are available in all standard voltages and are electrically reversible. Other belt speeds and face widths are available. Please consult **Van der Graaf: +1 905 793-8100**.



# TM400 SERIES

(16.0" diameter)

## SPECIFICATIONS

### WITH 0.25" LAGGING

V (ft/min)	551	398	311	235	220	190	158
NLV (ft/min)	572	414	324	244	229	198	164
BP (lbs)	450	623	796	1055	1125	1302	1567
T' lbs.	307	425	543	720	768	889	1070

### TM400 - 675 (7.5 HP 1125 RPM) Minimum Face Width (L): DESIGN A = 23.62" DESIGN B = 25.59" WEIGHT = 496.00 LBS. @ L=25.59"

V (ft/min)	356	257	201	152	142	123	102
NLV (ft/min)	370	267	209	158	148	128	106
BP (lbs)	696	964	1231	1632	1741	2014	2424
T' lbs.	461	638	815	1081	1153	1334	1606

### WITH 0.25" LAGGING

V (ft/min)	367	265	208	157	147	127	105
NLV (ft/min)	382	276	216	163	153	132	110
BP (lbs)	675	934	1193	1582	1688	1953	2351
T' lbs.	461	638	815	1081	1153	1334	1606

### TM400 - 455 (5.5 HP 1740 RPM) Minimum Face Width (L): DESIGN A = 23.62" DESIGN B = 25.59" WEIGHT = 485.00 LBS. @ L=25.59"

V (ft/min)	534	386	302	228	214	185	153
NLV (ft/min)	555	401	314	237	222	192	159
BP (lbs)	340	471	602	798	851	985	1185
T' lbs.	225	312	398	528	564	652	785

### WITH 0.25" LAGGING

V (ft/min)	551	398	311	235	220	190	158
NLV (ft/min)	572	414	324	244	229	198	164
BP (lbs)	330	457	583	773	825	955	1149
T' lbs.	225	312	398	528	564	652	785

### TM400 - 655 (5.5 HP 1125 RPM) Minimum Face Width (L): DESIGN A = 23.62" DESIGN B = 25.59" WEIGHT = 485.00 LBS. @ L=25.59"

V (ft/min)	356	257	201	152	142	123	102
NLV (ft/min)	370	267	209	158	148	128	106
BP (lbs)	511	707	902	1197	1276	1477	1778
T' lbs.	338	468	590	792	845	978	1177

### WITH 0.25" LAGGING

V (ft/min)	367	265	208	157	147	127	105
NLV (ft/min)	382	276	216	163	153	132	110
BP (lbs)	495	685	875	1160	1238	1432	1724
T' lbs.	338	468	590	792	845	978	1177

V = Velocity NLV = No Load Velocity BP = Belt Pull T = Torque RPM = Internal Electric Motor RPM

**NOTE:** Total weight of the unit increases by 6.72 lbs. per inch above 25.59 inches.

All drum motors are available in all standard voltages and are electrically reversible. Other belt speeds and face widths are available. Please consult **Van der Graaf: +1 905 793-8100**.



# TM400 SERIES

(16.0" diameter)

## SPECIFICATIONS

TM400 - 440 (4.0 HP 1740RPM)	Minimum Face Width (L): DESIGN A = 23.62" DESIGN B = 25.59" WEIGHT = 474.00 LBS. @ L=25.59"						
V (ft/min)	534	386	302	228	214	185	153
NLV (ft/min)	555	401	314	237	222	192	159
BP (lbs)	248	343	438	580	619	716	862
T' lbs.	164	227	290	384	410	474	571
<b>WITH 0.25" LAGGING</b>							
V (ft/min)	551	398	311	235	220	190	158
NLV (ft/min)	572	414	324	244	229	198	164
BP (lbs)	240	332	424	562	600	694	836
T' lbs.	164	227	290	384	410	474	571
TM400 - 840 (4.0 HP 850 RPM)	Minimum Face Width (L): DESIGN A = 23.62" DESIGN B = 25.59" WEIGHT = 496.00 LBS. @ L=25.59"						
V (ft/min)	267	193	151	114	107	92	77
NLV (ft/min)	277	200	157	118	111	96	80
BP (lbs)	495	685	875	1160	1238	1432	1724
T' lbs.	328	454	580	768	820	949	1142
<b>WITH 0.25" LAGGING</b>							
V (ft/min)	275	199	156	117	110	95	79
NLV (ft/min)	286	207	162	122	114	99	82
BP (lbs)	480	664	849	1125	1200	1389	1671
T' lbs.	328	454	580	768	820	949	1142
TM400 - 830 (3.0 HP 850 RPM)	Minimum Face Width (L): DESIGN A = 23.62" DESIGN B = 25.59" WEIGHT = 485.00 LBS. @ L=25.59"						
V (ft/min)	267	193	151	114	107	92	77
NLV (ft/min)	277	200	157	118	111	96	80
BP (lbs)	371	514	656	870	928	1074	1293
T' lbs.	246	340	435	576	615	711	856
<b>WITH 0.25" LAGGING</b>							
V (ft/min)	275	199	156	117	110	95	79
NLV (ft/min)	286	207	162	122	114	99	82
BP (lbs)	380	498	636	844	900	1041	1254
T' lbs.	246	340	435	576	615	711	856
TM400 - 1230 (3.0 HP 550 RPM)	Minimum Face Width (L): DESIGN A = 23.62" DESIGN B = 25.59" WEIGHT = 507.00 LBS. @ L=25.59"						
V (ft/min)	178	129	101	76	71	61	51
NLV (ft/min)	185	134	105	79	74	64	53
BP (lbs)	557	771	985	1305	1392	1611	1940
T' lbs.	369	510	652	865	922	1067	1284

V = Velocity NLV = No Load Velocity BP = Belt Pull T = Torque RPM = Internal Electric Motor RPM

**NOTE:** Total weight of the unit increases by 6.72 lbs. per inch above 25.59 inches.

All drum motors are available in all standard voltages and are electrically reversible. Other belt speeds and face widths are available. Please consult **Van der Graaf: +1 905 793-8100**.



# TM400 SERIES

(16.0" diameter)

## SPECIFICATIONS

### WITH 0.25" LAGGING

V (ft/min)	184	133	104	78	73	63	53
NLV (ft/min)	191	138	108	81	76	66	54
BP (lbs)	540	747	955	1266	1350	1562	1880
T' lbs.	369	510	652	865	922	1067	1284

### TM400 - 1220 (2.0 HP 550 RPM) Minimum Face Width (L): DESIGN A = 23.62" DESIGN B = 25.59" WEIGHT = 507.00 LBS. @ L=25.59"

V (ft/min)	178	129	101	76	71	61	51
NLV (ft/min)	185	134	105	79	74	64	53
BP (lbs)	371	514	656	870	928	1074	1293
T' lbs.	246	340	435	576	615	711	856

### WITH 0.25" LAGGING

V (ft/min)	184	133	104	78	73	63	53
NLV (ft/min)	191	138	108	81	76	66	54
BP (lbs)	360	498	636	844	900	1041	1254
T' lbs.	246	340	435	576	615	711	856

V = Velocity NLV = No Load Velocity BP = Belt Pull T = Torque RPM = Internal Electric Motor RPM

**NOTE:** Total weight of the unit increases by 6.72 lbs. per inch above 25.59 inches.

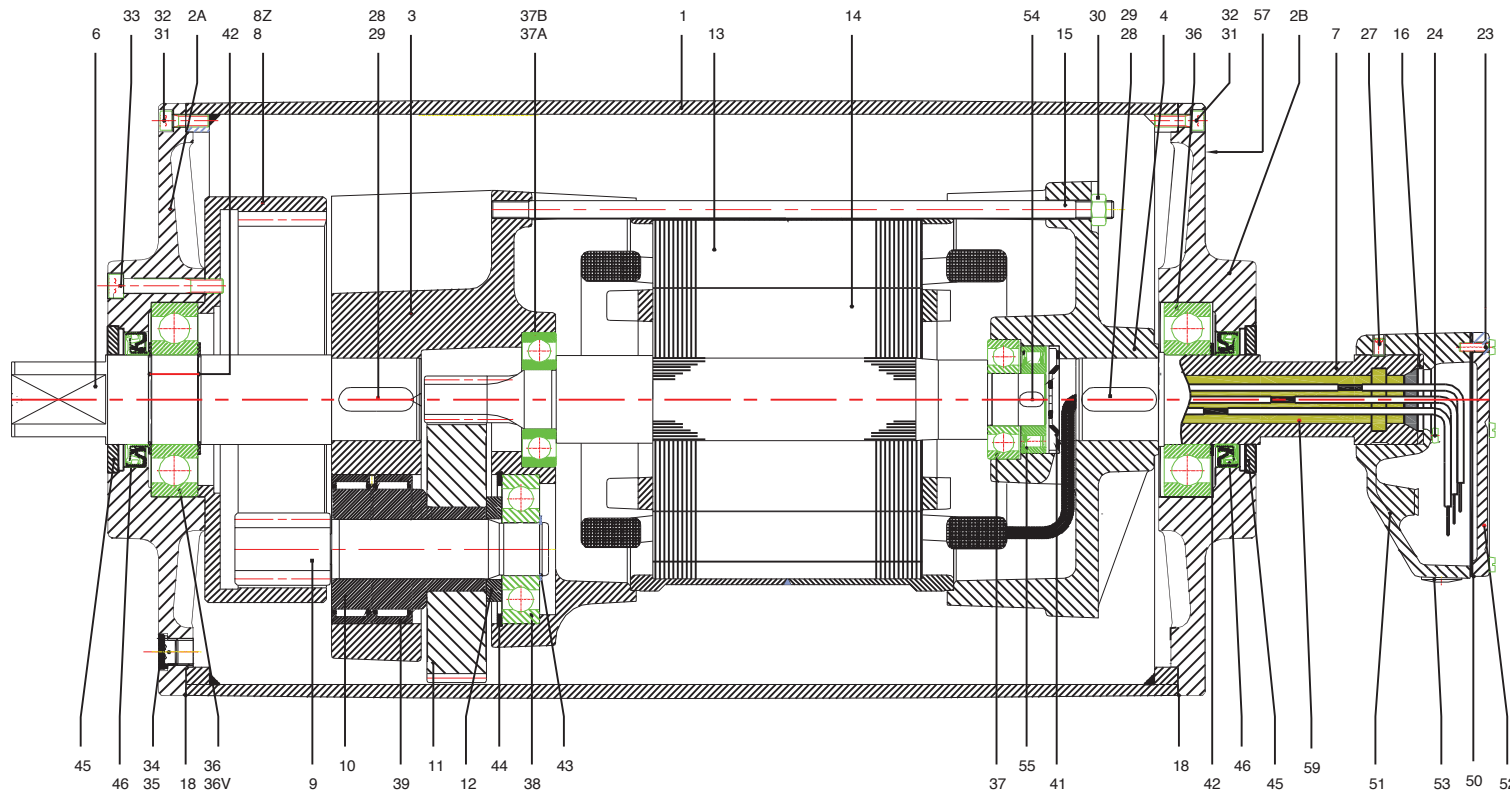
All drum motors are available in all standard voltages and are electrically reversible. Other belt speeds and face widths are available. Please consult **Van der Graaf: +1 905 793-8100.**



# TM400 SERIES

# (16.0" diameter)

# CROSS SECTIONAL & PARTS DESCRIPTION



ITEM	PART DESCRIPTION	ITEM	PART DESCRIPTION	ITEM	PART DESCRIPTION	ITEM	PART DESCRIPTION
1	Shell	18	Gasket	37	Ball Bearing	55	Backstop Bearing - Optional
2A	End Flange	20	Terminal Board	37 A	Ball Bearing	57	Data Plate
2B	End Flange	23	Fillister head Machine Screw	38	Ball Bearing	59	Epoxy Resin
3	Gear Housing	24	Fillister head Machine Screw	39	Needle Bearing		
4	Motor Flange	27	Set Screw	41	Disc		
6	Shaft End	28	Set Screw	42	Snap Ring		
7	Hollow Shaft	29	Key	43	Snap Ring		
8 Z	Internal Gear	30	Nut	44	Snap Ring		
9/10	Pinion with Bushing	31	Socket Head Cap Screw	45	End Plate		
11	Gear	32	Bonded Seal Washer	46	Cassette Seal		
12	Distance Ring	33	Socket Head Cap Screw	50	Seal		
13	Stator	34	Filler Plug	51	Junctin Box		
14	Rotor	35	Washer	52	Junction Box Cove		
15	Threaded Rod	36	Ball Bearing	53	Plug		
16	Nitrile Gasket	36 V	Cylindrical Roller Bearing	54	Key - Optional		