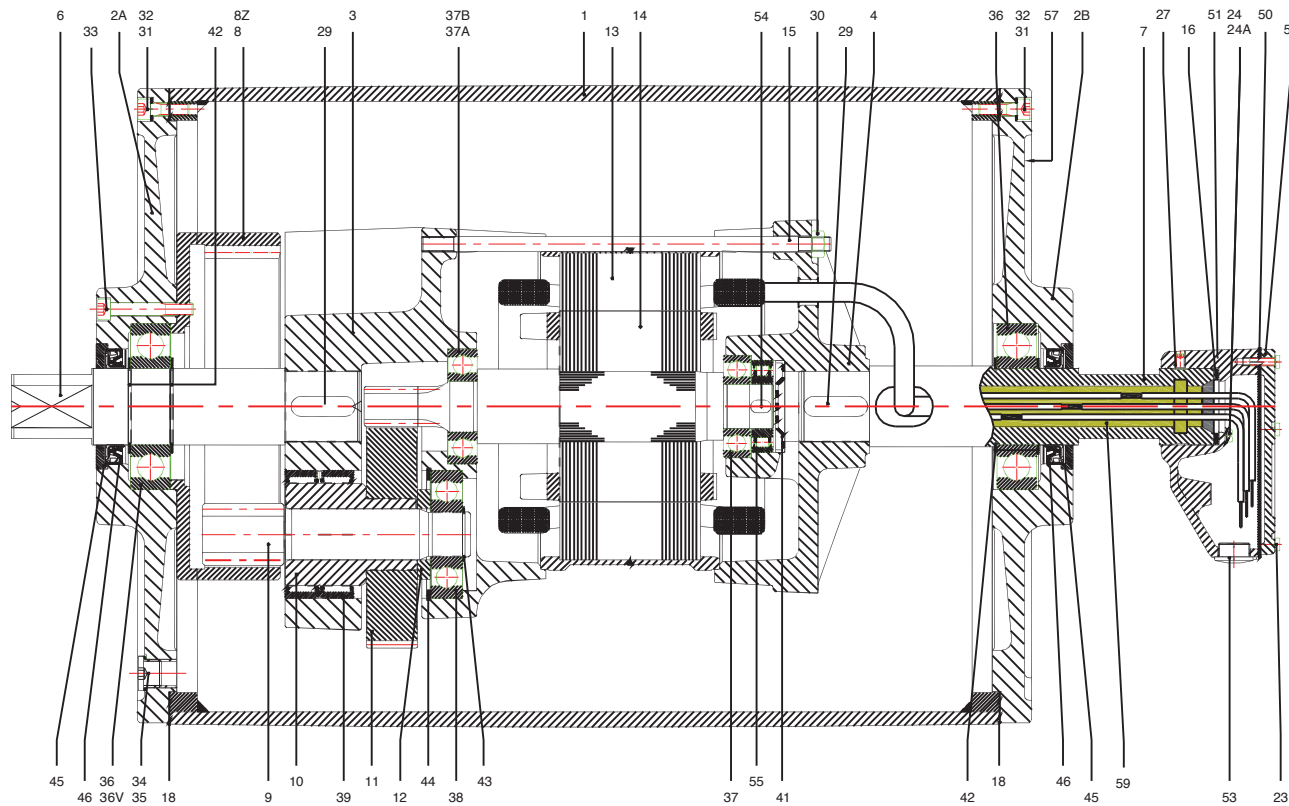


TM500A60 SERIES

(20.0" diameter)

CROSS SECTIONAL & PARTS DESCRIPTION



| ITEM | PART DESCRIPTION | ITEM | PART DESCRIPTION | ITEM | PART DESCRIPTION | ITEM | PART DESCRIPTION |
|------|---------------------|------|------------------------------|------|-------------------|------|-----------------------------|
| 1 | Shell | 18 | Gasket | 37 | Ball Bearing | 55 | Backstop Bearing - Optional |
| 2A | End Flange | 20 | Terminal Board | 37 A | Ball Bearing | 57 | Data Plate |
| 2B | End Flange | 23 | Fillister head Machine Screw | 38 | Ball Bearing | 59 | Epoxy Resin |
| 3 | Gear Housing | 24 | Fillister head Machine Screw | 39 | Needle Bearing | | |
| 4 | Motor Flange | 27 | Set Screw | 41 | Disc | | |
| 6 | Shaft End | 28 | Set Screw | 42 | Snap Ring | | |
| 7 | Hollow Shaft | 29 | Key | 43 | Snap Ring | | |
| 8 Z | Internal Gear | 30 | Nut | 44 | Snap Ring | | |
| 9/10 | Pinion with Bushing | 31 | Socket Head Cap Screw | 45 | End Plate | | |
| 11 | Gear | 32 | Bonded Seal Washer | 46 | Cassette Seal | | |
| 12 | Distance Ring | 33 | Socket Head Cap Screw | 50 | Seal | | |
| 13 | Stator | 34 | Filler Plug | 51 | Junctin Box | | |
| 14 | Rotor | 355 | Washer | 52 | Junction Box Cove | | |
| 15 | Threaded Rod | 36 | Ball Bearing | 53 | Plug | | |
| 16 | Nitrile Gasket | 36 V | Cylindrical Roller Bearing | 54 | Key - Optional | | |

