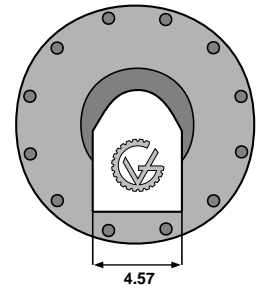
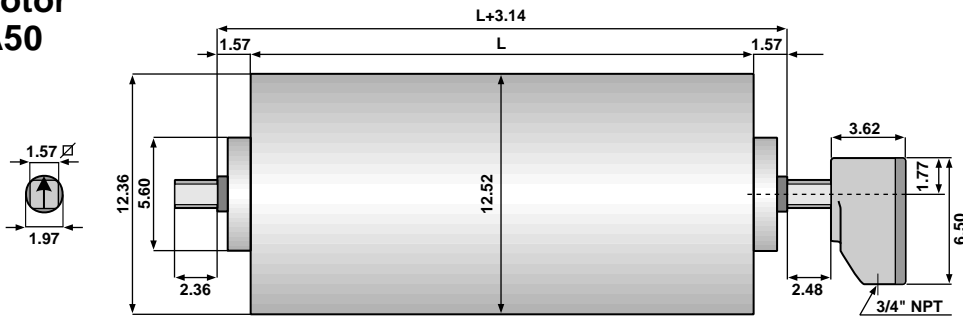
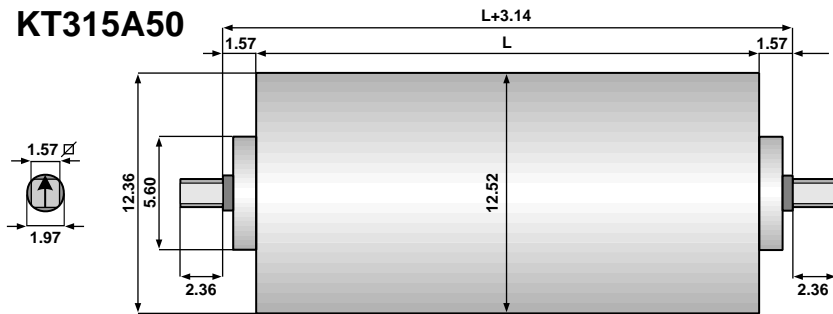


Type 315 Dimensions (in inches)

Drum Motor TM315A50



Idler KT315A50

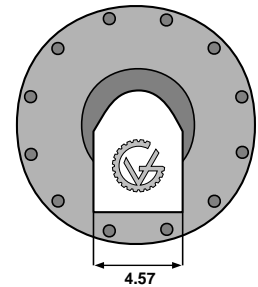
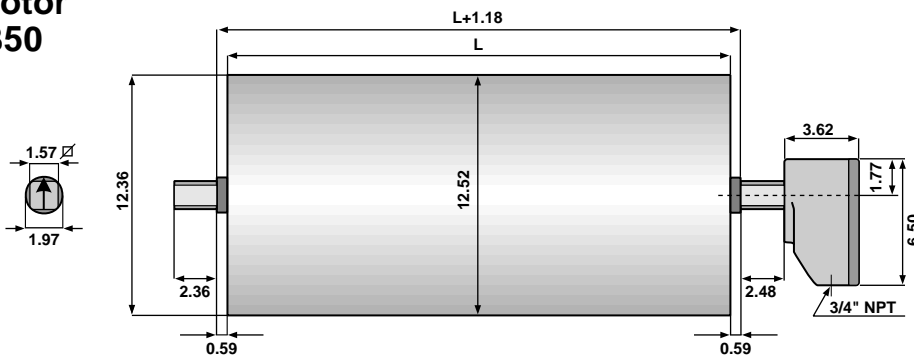


Standard face widths (L) in inches for the
TM315A50 and KT315A50:

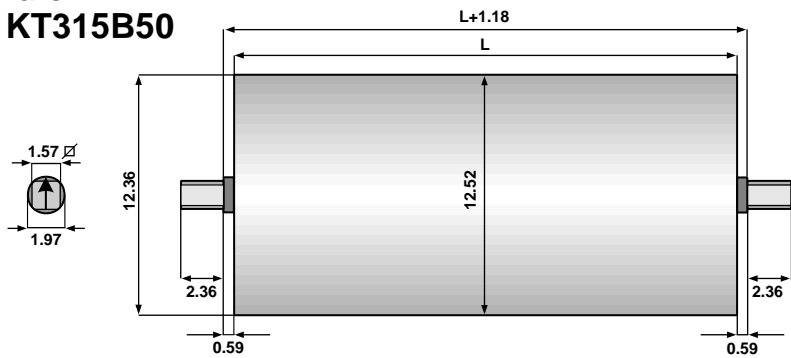
19.69* 21.65* 23.62 25.59 27.56 29.53 31.50
33.46 35.43 37.40 39.38 41.34 43.31 45.28

*This face width is not available in all horsepower.

Drum Motor TM315B50



Idler KT315B50

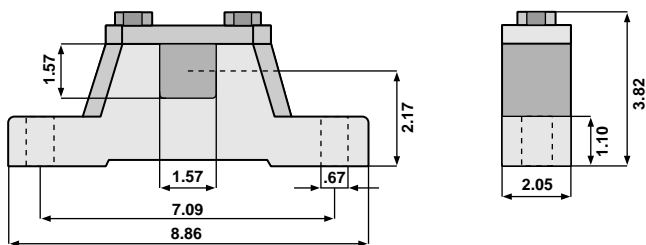


Standard face widths (L) in inches for the
TM315B50 and KT315B50:

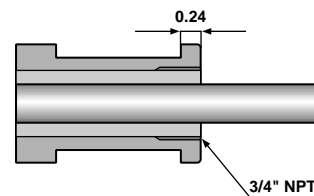
21.65* 23.62* 25.59 27.56 29.53 31.50
33.46 35.43 37.40 39.38 41.34 43.31 45.28

*This face width is not available in all horsepower.

Bracket AB 50



Optional Cable Type



Note: When Optional Cable Type is selected,
the minimum face width (L) increases by 1.969 inches.