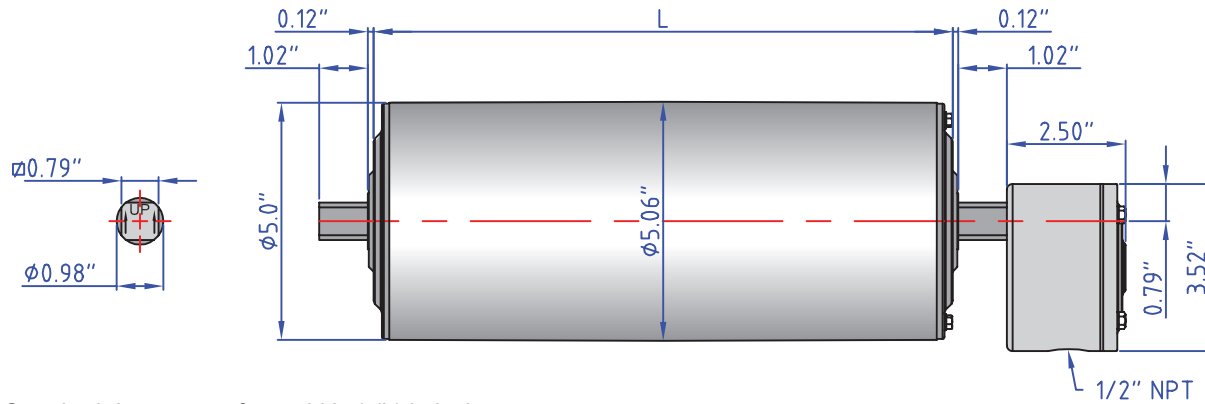


SSV TM127 SERIES DIMENSIONS (5.0" diameter)



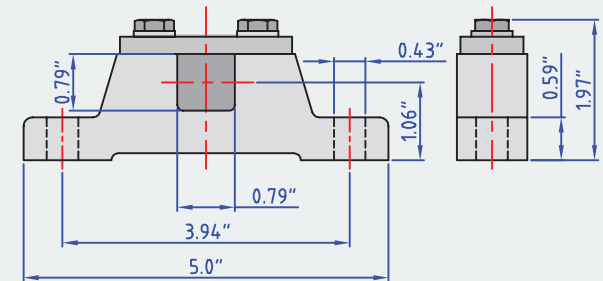
SSV TM127B25 Drum Motor (matching Idler KT127B25**)



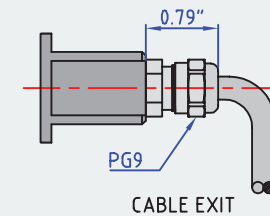
Standard drum motor face widths* (L) in inches:

| | | | | | | | | |
|-------|-------|-------|-------|-------|-------|-------|-------|-------|
| 10.83 | 11.81 | 13.78 | 15.75 | 17.72 | 19.69 | 21.65 | 23.62 | 25.59 |
| 27.56 | 29.53 | 31.50 | 33.46 | 35.43 | 37.40 | 39.37 | 41.34 | 43.31 |
| 45.28 | 47.24 | | | | | | | |

Bracket AB 25



Optional Cable Type



*Some face widths are not available in all horsepower. For minimum available face widths refer to page 16.

**Idler dimensions are identical to the drum motor with no junction box.